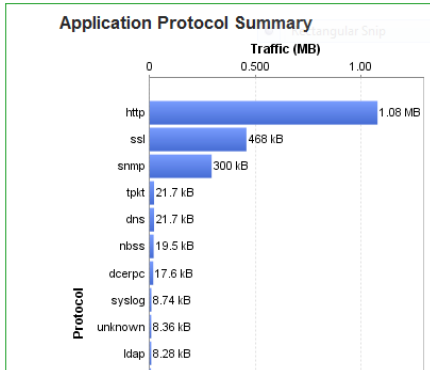


FlowViewPlus



E-Mail: enquiries@kenson.co.uk
Telephone: +44(0)1285 647900
Web: www.kensonit.com

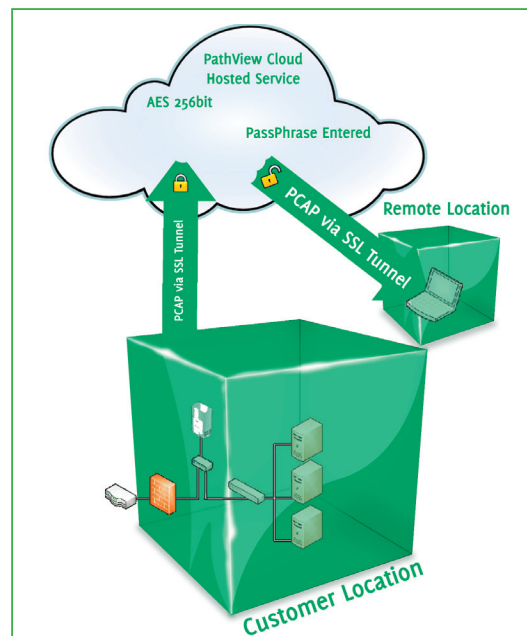
Simple, Secure, Remote Packet Capture for Use with Wireshark™ and Other Packet Analysis Solutions



FlowView Plus generates a summary of the top traffic sources and applications used on your network for analysis without the use of any analysis tool.

PathView Cloud instant-value Network Performance Management leverages a zero administration, cloud-based service to meet the performance demands of today's distributed network infrastructure and network-dependent applications including VoIP, Video, Virtualization and IP Storage. PathView Cloud provides unmatched performance insight to network leaders enabling pre-assessment, continuous monitoring and remote troubleshooting capabilities.

PathView Cloud and the FlowView Plus add-on module perform automated packet capture in response to performance problems at any remote location. FlowView Plus enables secure remote packet captures encrypted with FIPS 140-2 compliant AES 256bit encryption. These captures can be performed on-demand, scheduled or triggered by PathView SLA violation alerts*. Automatic packet capture summarizations within the PathView user interface clearly identify the top users and applications consuming bandwidth. Expert users can download full capture files for analysis within Wireshark or other analysis tools.



FlowView Plus enables secure storage of unlimited captures in the cloud for up to one year.

FlowView Plus provides you with the ability to record the actual traffic flowing over a network for the purposes of:

- Reviewing network usage patterns
- Performing forensics analysis to uncover the root cause of network problems
- Identifying security threats
- Ensuring data communications and network usage complies with outlined policy



The PathView microAppliance serves as the infrastructure for performing and transmitting the capture.

* Coming soon.

Zero Administration Network Performance Management Service:

Base Service

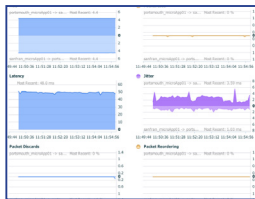
PathView



- Real-time Network Performance Management through a simple, cloud-based hosted service
- Active bandwidth monitoring and end to end QoS verification
- True end to end performance insight to any IP address over LANs, WANs, VPNs or the Internet
- Advanced diagnostics identify dozens of network faults and configuration issues

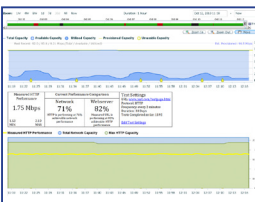
Add-on Modules (Via zero-administration PathView Appliance)

AppViewVoice



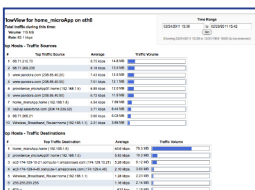
- Active application performance monitoring
- Pre-assess networks using live VoIP traffic without investing in or deploying any VoIP hardware
- Stress-test networks over days or weeks to identify issues caused by periodic or infrequent activities
- Generate traffic matching the exact port, protocol and behavior of major VoIP codecs

AppViewWeb



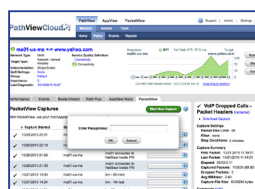
- Active application performance monitoring
- Continuously monitor the performance and uptime of any web site from the perspective that matters most, your offices and customers
- Analyze HTTP/S and DNS to determine the cause of poor performance, identifying exactly how fast a network can deliver web traffic and compare against live web traffic
- Works against internal and external web servers, including third party web sites with no modification

FlowView



- Automated remote site traffic & flow analysis
- Easy, cost effective method of generating and analyzing flow information from any remote location
- Full visibility independent of existing network hardware at remote site
- Seamless integration with complete PathView Cloud capabilities including active network analysis, application performance monitoring and packet capture

FlowViewPlus



- Simple, secure and affordable remote packet capture for use with WireShark™ or other analysis tools
- Trigger packet captures remotely, create recurring scheduled captures or automatically capture packets on SLA violations*
- Complete end to end security with 256 bit AES encryption and SSL-tunnel upload and download
- WireShark™ compatible filter syntax and compressed file format; no need to learn new tools or syntax

* Coming Soon