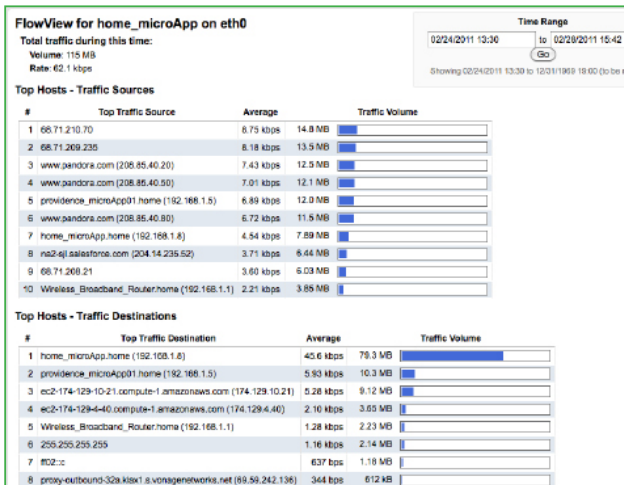


FlowView

Easy, cost effective method of generating and analyzing flow information from any remote location



PathView Cloud and the add-on FlowView module is the first cloud-based integrated solution to provide network engineers with a complete, light-weight and continuous view of network activity at any remote location, independent of the network architecture or existing network hardware.

PathView Cloud and FlowView generate flow data at any location with a microAppliance. FlowView provides integrated, cloud based analysis with remote visibility into network activity, while maintaining compatibility with any third-party flow analysis tool.

The PathView Cloud suite of services now includes a comprehensive set of assessment, monitoring and troubleshooting capabilities including PathView's end-to-end network performance visibility, FlowView's user and application usage insight, and deep forensic troubleshooting with FlowView Plus.

With PathView Cloud and FlowView, network engineers have a unique, cloud-based capability for conducting active network analysis, flow and packet capture – all with a single solution.

PathView Cloud and FlowView enable:

- Quick, easy analysis of network usage patterns
- An integrated view of utilization, instantly identifying root cause of problems
- Capability to drill down to track the usage of any user or application

PathView microAppliance

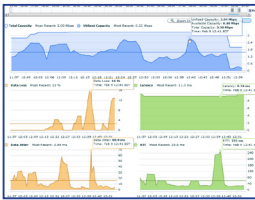


AppNeta's PathView microAppliance is a small, zero administration device that remotely tests and troubleshoots complex networks, even through third-party infrastructure.

Zero Administration Network Performance Management Service:

Base Service

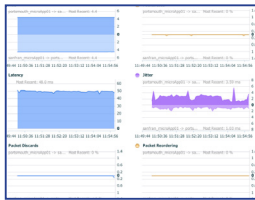
PathView



- Real-time Network Performance Management through a simple, cloud-based hosted service
- Active bandwidth monitoring and end to end QoS verification
- True end to end performance insight to any IP address over LANs, WANs, VPNs or the Internet
- Advanced diagnostics identify dozens of network faults and configuration issues

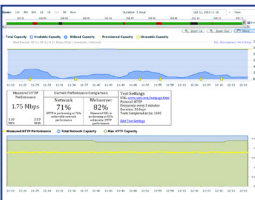
Add-on Modules (Via zero-administration PathView Appliance)

AppViewVoice



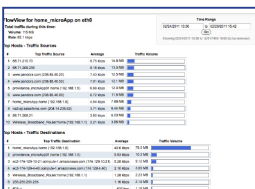
- Active application performance monitoring
- Pre-assess networks using live VoIP traffic without investing in or deploying any VoIP hardware
- Stress-test networks over days or weeks to identify issues caused by periodic or infrequent activities
- Generate traffic matching the exact port, protocol and behavior of major VoIP codecs

AppViewWeb



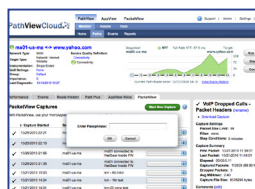
- Active application performance monitoring
- Continuously monitor the performance and uptime of any web site from the perspective that matters most, your offices and customers
- Analyze HTTP/S and DNS to determine the cause of poor performance, identifying exactly how fast a network can deliver web traffic and compare against live web traffic
- Works against internal and external web servers, including third party web sites with no modification

FlowView



- Automated remote site traffic & flow analysis
- Easy, cost effective method of generating and analyzing flow information from any remote location
- Full visibility independent of existing network hardware at remote site
- Seamless integration with complete PathView Cloud capabilities including active network analysis, application performance monitoring and packet capture

FlowViewPlus



- Simple, secure and affordable remote packet capture for use with WireShark™ or other analysis tools
- Trigger packet captures remotely, create recurring scheduled captures or automatically capture packets on SLA violations*
- Complete end to end security with 256 bit AES encryption and SSL-tunnel upload and download
- WireShark™ compatible filter syntax and compressed file format; no need to learn new tools or syntax

* Coming Soon