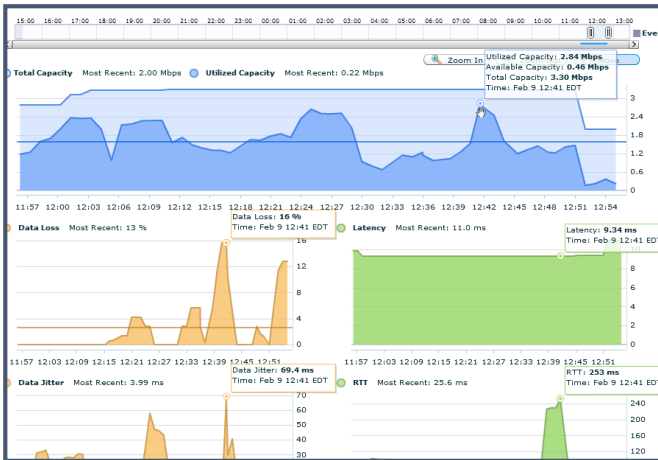


AppNeta delivers instant-value Network Performance Management solutions required to drive exceptional application performance across all data center, cloud, remote office and mobile environments.

E-Mail: [enquiries@kenson.co.uk](mailto:enquiries@kenson.co.uk)  
 Telephone: +44(0)1285 647900  
 Web: [www.kensonit.com](http://www.kensonit.com)



Today's businesses are critically dependent on predictable network performance. The leading business applications including VoIP/ Unified Communications, SaaS / cloud services, IP storage, disaster recovery and backup, and application virtualization are often delivered over third party

networks where complete performance insight is difficult to obtain. These critical business services run the risk of failure if network performance requirements aren't met.

AppNeta's award winning PathView Cloud Network Performance Management solution leverages a zero administration, cloud-based service to meet the performance demands of today's distributed network infrastructure and network-dependent applications including VoIP, Video, Virtualization and IP Storage.

PathView Cloud provides unmatched performance insight to network leaders enabling pre-assessment, continuous monitoring and remote troubleshooting capabilities.

The integrated suite of performance capabilities includes:

- Active bandwidth monitoring and QoS verification
- Active application performance monitoring
- Remotely managed flow generation and analysis
- Automated remote site packet capture

“You often have multiple tools doing everything that PathView Cloud does in one entire solution, from end to end. It's nice to be able to keep on top of everything, and see it all on one page.”

- Hart Ripley, ATS Automation

PathView microAppliance



AppNeta's PathView microAppliance is a small, zero administration device that remotely tests and troubleshoots complex networks, even through third-party infrastructure.

PathView is the only cloud-based Network Performance Management solution that offers breadth of performance insight and unmatched time to value. The zero-administration, cloud-based service eliminates the time, cost and resources that network management has traditionally required.

# Zero Administration Network Performance Management Service:

## Base Service

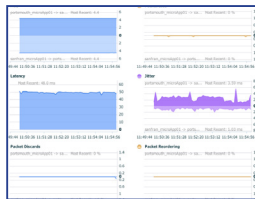
### PathView



- Real-time Network Performance Management through a simple, cloud-based hosted service
- Active bandwidth monitoring and end to end QoS verification
- True end to end performance insight to any IP address over LANs, WANs, VPNs or the Internet
- Advanced diagnostics identify dozens of network faults and configuration issues

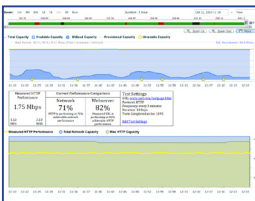
## Add-on Modules (Via zero-administration PathView Appliance)

### AppViewVoice



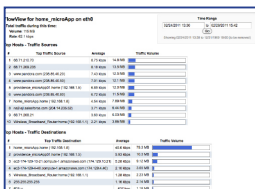
- Active application performance monitoring
- Pre-assess networks using live VoIP traffic without investing in or deploying any VoIP hardware
- Stress-test networks over days or weeks to identify issues caused by periodic or infrequent activities
- Generate traffic matching the exact port, protocol and behavior of major VoIP codecs

### AppViewWeb



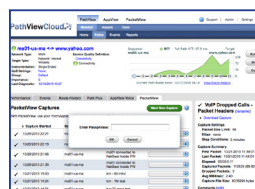
- Active application performance monitoring
- Continuously monitor the performance and uptime of any web site from the perspective that matters most, your offices and customers
- Analyze HTTP/S and DNS to determine the cause of poor performance, identifying exactly how fast a network can deliver web traffic and compare against live web traffic
- Works against internal and external web servers, including third party web sites with no modification

### FlowView



- Automated remote site traffic & flow analysis
- Easy, cost effective method of generating and analyzing flow information from any remote location
- Full visibility independent of existing network hardware at remote site
- Seamless integration with complete PathView Cloud capabilities including active network analysis, application performance monitoring and packet capture

### FlowViewPlus



- Simple, secure and affordable remote packet capture for use with WireShark™ or other analysis tools
- Trigger packet captures remotely, create recurring scheduled captures or automatically capture packets on SLA violations\*
- Complete end to end security with 256 bit AES encryption and SSL-tunnel upload and download
- WireShark™ compatible filter syntax and compressed file format; no need to learn new tools or syntax

\* Coming Soon